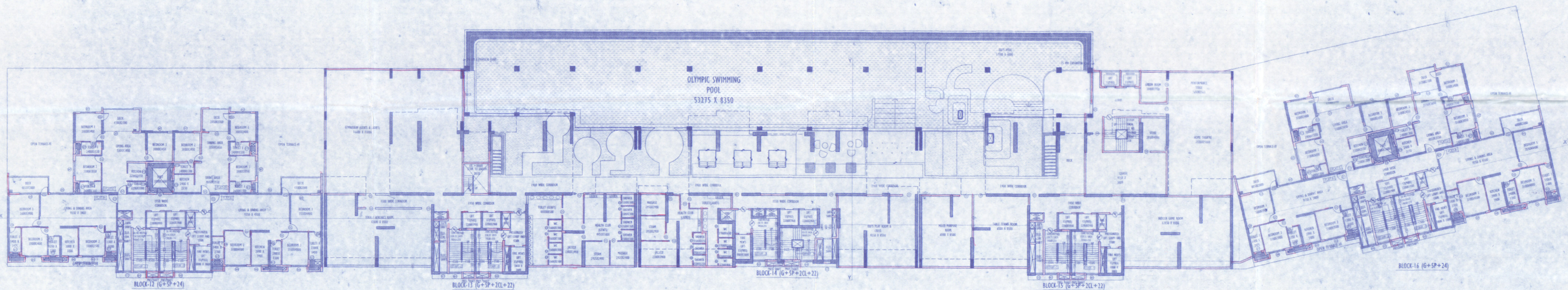


7TH FLOOR PLAN (BLOCK-12, 13, 14, 15 & 16)



6TH FLOOR PLAN (BLOCK-12, 13, 14, 15 & 16)

GENERAL NOTE:

1. ALL DIMENSIONS ARE IN MILLIMETRES.
2. THIS DRAWING SHOULD BE READ IN CONJUNCTION WITH ALL OTHER RELEVANT ARCHITECTURAL DRAWINGS.
3. ONLY WRITTEN DIMENSIONS SHALL BE FOLLOWED.
4. FOR DETAILED DESCRIPTION OF ITEMS REFER TECHNICAL SPECIFICATION.
5. ALL MID LEVELS/DIMENSIONS DENOTES STRUCTURAL LEVELS/DIMENSIONS WITHOUT FINISH.
6. FOR DIMENSIONS OF BEAM, COL & OTHERS STRUCTURAL MEMBERS SHOULD BE FOLLOWED THE STRUCTURAL DWG.

DOOR AND WINDOW OPENING SCHEDULE	DOOR	WINDOW	LEVEL	HT. (MM)	W. (MM)
01	1200	1800	2000	2000	1200
02	1200	1800	2000	2000	1200
03	1200	1800	2000	2000	1200
04	1200	1800	2000	2000	1200
05	1200	1800	2000	2000	1200
06	1200	1800	2000	2000	1200
07	1200	1800	2000	2000	1200
08	1200	1800	2000	2000	1200
09	1200	1800	2000	2000	1200
10	1200	1800	2000	2000	1200
11	1200	1800	2000	2000	1200
12	1200	1800	2000	2000	1200
13	1200	1800	2000	2000	1200
14	1200	1800	2000	2000	1200
15	1200	1800	2000	2000	1200
16	1200	1800	2000	2000	1200
17	1200	1800	2000	2000	1200
18	1200	1800	2000	2000	1200
19	1200	1800	2000	2000	1200
20	1200	1800	2000	2000	1200
21	1200	1800	2000	2000	1200
22	1200	1800	2000	2000	1200
23	1200	1800	2000	2000	1200
24	1200	1800	2000	2000	1200
25	1200	1800	2000	2000	1200
26	1200	1800	2000	2000	1200
27	1200	1800	2000	2000	1200
28	1200	1800	2000	2000	1200
29	1200	1800	2000	2000	1200
30	1200	1800	2000	2000	1200

WE HEREBY CERTIFY THAT THE FOUNDATION AND SUPERSTRUCTURE OF THE BUILDING PROPOSED FOR CONSTRUCTION ON PLOT, HOLDING NO C4-173/NEW GANGA BANDH ROAD, UNDER MAHESHTALA MUNICIPALITY, WARD NO -20, P.S. MAHESHTALA, KOLKATA - 700 140, SOUTH 24 PARGANAS, HAVE BEEN SO DESIGNED BY ME/US WILL MAKE SUCH FOUNDATION AND SUPERSTRUCTURE SAFE IN ALL RESPECT INCLUDING THE CONSIDERATION OF BEARING CAPACITY AND SETTLEMENT OF SOIL ETC.

ALOK ROY
 Empowered Geotechnical Engineer
 Kolkata Municipal Corporation
 Change-1, No. 25, 1/ST
 BA, Milan Park
 Kolkata-700 054

SIGN OF GEO-TECHNICAL ENGINEER

WE HEREBY CERTIFY THAT THE FOUNDATION AND SUPERSTRUCTURE OF THE BUILDING PROPOSED FOR CONSTRUCTION ON PLOT, HOLDING NO C4-173/NEW GANGA BANDH ROAD, UNDER MAHESHTALA MUNICIPALITY, WARD NO -20, P.S. MAHESHTALA, KOLKATA - 700 140, SOUTH 24 PARGANAS, HAVE BEEN SO DESIGNED BY ME/US WILL MAKE SUCH FOUNDATION AND SUPERSTRUCTURE SAFE IN ALL RESPECT INCLUDING THE CONSIDERATION OF BEARING CAPACITY AND SETTLEMENT OF SOIL ETC.

SANJIV P. PATSANGI
 M. ARCHITECTURE (CONS. ENGR.)
 P.C.E., F.I.E.(E)-24292-43
 REGISTERED STRUCTURAL ENGINEER
 KOLKATA MUNICIPAL CORPORATION
 REVIEWER: 14/10/2022

SIGN OF STRUCTURAL REVIEWER

WE HEREBY CERTIFY THAT THE FOUNDATION AND SUPERSTRUCTURE OF THE BUILDING PROPOSED FOR CONSTRUCTION ON PLOT, HOLDING NO C4-173/NEW GANGA BANDH ROAD, UNDER MAHESHTALA MUNICIPALITY, WARD NO -20, P.S. MAHESHTALA, KOLKATA - 700 140, SOUTH 24 PARGANAS, HAVE BEEN SO DESIGNED BY ME/US WILL MAKE SUCH FOUNDATION AND SUPERSTRUCTURE SAFE IN ALL RESPECT INCLUDING THE CONSIDERATION OF BEARING CAPACITY AND SETTLEMENT OF SOIL ETC.

ANKIT AGARWALA
 E. CIVIL ENGINEER (STRUC.)
 G. ENGR. IN STRUCT. & CONSTRUC.
 MEMBERSHIP NO. 201800000
 REGISTERED ARCHITECTURAL ENGINEER
 CLASS - I, E.S.E. 1172

SIGN OF STRUCTURAL ENGINEER

WE HEREBY CERTIFY THAT THE FOUNDATION AND SUPERSTRUCTURE OF THE BUILDING PROPOSED FOR CONSTRUCTION FOR ROYAL GANGES - I (PHASE - II), HOLDING NO C4-173/NEW GANGA BANDH ROAD, UNDER MAHESHTALA MUNICIPALITY, WARD NO -20, P.S. MAHESHTALA, KOLKATA - 700 140, SOUTH 24 PARGANAS, HAVE BEEN SO DESIGNED BY ME/US WILL MAKE SUCH FOUNDATION AND SUPERSTRUCTURE SAFE IN ALL RESPECT INCLUDING THE CONSIDERATION OF BEARING CAPACITY AND SETTLEMENT OF SOIL ETC.

Subir Kumar Basu
 Subir Complex Pvt. Ltd. & others
 Authorized Signatory

SIGN OF OWNER

WE HEREBY CERTIFY THAT THE FOUNDATION AND SUPERSTRUCTURE OF THE BUILDING PROPOSED FOR CONSTRUCTION FOR ROYAL GANGES - I (PHASE - II), HOLDING NO C4-173/NEW GANGA BANDH ROAD, UNDER MAHESHTALA MUNICIPALITY, WARD NO -20, P.S. MAHESHTALA, KOLKATA - 700 140, SOUTH 24 PARGANAS, HAVE BEEN SO DESIGNED BY ME/US WILL MAKE SUCH FOUNDATION AND SUPERSTRUCTURE SAFE IN ALL RESPECT INCLUDING THE CONSIDERATION OF BEARING CAPACITY AND SETTLEMENT OF SOIL ETC.

Subir Kumar Basu
 SUBIR KUMAR BASU
 Registered Architect
 Regn. No. - CA784375

SIGN OF ARCHITECT

PROJECT :-

PROPOSED RESIDENTIAL COMPLEX (ROYAL GANGES - I) (PHASE - II) CONTAINING EXISTING 22 NOS ROW HOUSES (G+2) (HEIGHT : 9.6 M) , 9 NOS TOWN HOUSES (G+5) (HEIGHT - 20 METER) AND PROPOSED 2 NOS TOWERS (G+5P+24) (HEIGHT - 105.72 METER) , 9 AND 3 NOS TOWERS (G+5P+2CL+22) (HEIGHT - 105.72 METER) , 9 TOWN HOUSES (G+5) (HEIGHT - 20 METER) AND 12 ROW HOUSES (G+2) (HEIGHT - 9.6 METER) , FOR SRUJAN COMPLEX PVT LTD & 109 OTHERS AT HOLDING NO - C4 -173 / NEW, GANGA BANDH ROAD, MOUZA KRISHNANAGAR, JL. NO.-1, L.R. KHATAN NO - 10125, 10128, 10129-10136, 10138-10141, 10143, 10145-10161, 10164 - 10220, 10223 - 10225, 10228, 10230 - 10236, 10242 - 10245, 10253 - 10257, 10292 - 10294, 10594 - 10597, L.R. DAG NO. 312(PART), 312 / 1157, 312/1222(PART), 312 / 1474(PART), 313, 314, 314 / 1217, 315, 315 / 1473, 316 TO 324, 380, 381(PART), 153/1475 UNDER MAHESHTALA MUNICIPALITY, WARD NO -20, P.S. MAHESHTALA, KOLKATA - 700 140, SOUTH 24 PARGANAS.

DWG. TITLE - BLOCK - 12 & 16 (G+5P+24) & 13,14,15(G+5P_2CL+22)

SHEET TITLE- 6TH & 7TH FLOOR PLAN

ARCHITECT
Subir Kumar Basu
 CONSULTING ARCHITECTS & ENGINEERS
 4, BROAD STREET
 KOLKATA-700019
 Website: www.subirkumarbasu.com

DRAWN BY: A.R.B. SCALE: 1:175 SHEET SIZE: A0
 DATE: 15/11/2022 SHEET NO.: 04
 DRAWING NO.: SBK/BD/HR/AR/04



ORIGINAL COPY / DUPLICATION
 DEVIATION WOULD MEAN
 FINAL / PROVISIONALLY SANCTIONED
 RESIDENTIAL BUILDING PLAN
 necessary items should be shown for the safety
 of the building and its occupants.

24/1/16
 SKRIPAN COMPLEX PT. LTD. & OTHERS
 6, 10, 12, 14, 16, 18, 20, 22, 24, 26, 28, 30, 32, 34, 36, 38, 40, 42, 44, 46, 48, 50, 52, 54, 56, 58, 60, 62, 64, 66, 68, 70, 72, 74, 76, 78, 80, 82, 84, 86, 88, 90, 92, 94, 96, 98, 100, 102, 104, 106, 108, 110, 112, 114, 116, 118, 120, 122, 124, 126, 128, 130, 132, 134, 136, 138, 140, 142, 144, 146, 148, 150, 152, 154, 156, 158, 160, 162, 164, 166, 168, 170, 172, 174, 176, 178, 180, 182, 184, 186, 188, 190, 192, 194, 196, 198, 200, 202, 204, 206, 208, 210, 212, 214, 216, 218, 220, 222, 224, 226, 228, 230, 232, 234, 236, 238, 240, 242, 244, 246, 248, 250, 252, 254, 256, 258, 260, 262, 264, 266, 268, 270, 272, 274, 276, 278, 280, 282, 284, 286, 288, 290, 292, 294, 296, 298, 300, 302, 304, 306, 308, 310, 312, 314, 316, 318, 320, 322, 324, 326, 328, 330, 332, 334, 336, 338, 340, 342, 344, 346, 348, 350, 352, 354, 356, 358, 360, 362, 364, 366, 368, 370, 372, 374, 376, 378, 380, 382, 384, 386, 388, 390, 392, 394, 396, 398, 400, 402, 404, 406, 408, 410, 412, 414, 416, 418, 420, 422, 424, 426, 428, 430, 432, 434, 436, 438, 440, 442, 444, 446, 448, 450, 452, 454, 456, 458, 460, 462, 464, 466, 468, 470, 472, 474, 476, 478, 480, 482, 484, 486, 488, 490, 492, 494, 496, 498, 500, 502, 504, 506, 508, 510, 512, 514, 516, 518, 520, 522, 524, 526, 528, 530, 532, 534, 536, 538, 540, 542, 544, 546, 548, 550, 552, 554, 556, 558, 560, 562, 564, 566, 568, 570, 572, 574, 576, 578, 580, 582, 584, 586, 588, 590, 592, 594, 596, 598, 600, 602, 604, 606, 608, 610, 612, 614, 616, 618, 620, 622, 624, 626, 628, 630, 632, 634, 636, 638, 640, 642, 644, 646, 648, 650, 652, 654, 656, 658, 660, 662, 664, 666, 668, 670, 672, 674, 676, 678, 680, 682, 684, 686, 688, 690, 692, 694, 696, 698, 700, 702, 704, 706, 708, 710, 712, 714, 716, 718, 720, 722, 724, 726, 728, 730, 732, 734, 736, 738, 740, 742, 744, 746, 748, 750, 752, 754, 756, 758, 760, 762, 764, 766, 768, 770, 772, 774, 776, 778, 780, 782, 784, 786, 788, 790, 792, 794, 796, 798, 800, 802, 804, 806, 808, 810, 812, 814, 816, 818, 820, 822, 824, 826, 828, 830, 832, 834, 836, 838, 840, 842, 844, 846, 848, 850, 852, 854, 856, 858, 860, 862, 864, 866, 868, 870, 872, 874, 876, 878, 880, 882, 884, 886, 888, 890, 892, 894, 896, 898, 900, 902, 904, 906, 908, 910, 912, 914, 916, 918, 920, 922, 924, 926, 928, 930, 932, 934, 936, 938, 940, 942, 944, 946, 948, 950, 952, 954, 956, 958, 960, 962, 964, 966, 968, 970, 972, 974, 976, 978, 980, 982, 984, 986, 988, 990, 992, 994, 996, 998, 1000

APPROVED BY THE ARCHITECT
 DATE: 24/1/16
 PROJECT NO: 16/12/16

APARTMENT BUILDING

PROJECT NO: 16/12/16
 DATE: 24/1/16
 ARCHITECT: [Signature]
 PROJECT NAME: SKRIPAN COMPLEX PT. LTD. & OTHERS
 ADDRESS: 6, 10, 12, 14, 16, 18, 20, 22, 24, 26, 28, 30, 32, 34, 36, 38, 40, 42, 44, 46, 48, 50, 52, 54, 56, 58, 60, 62, 64, 66, 68, 70, 72, 74, 76, 78, 80, 82, 84, 86, 88, 90, 92, 94, 96, 98, 100, 102, 104, 106, 108, 110, 112, 114, 116, 118, 120, 122, 124, 126, 128, 130, 132, 134, 136, 138, 140, 142, 144, 146, 148, 150, 152, 154, 156, 158, 160, 162, 164, 166, 168, 170, 172, 174, 176, 178, 180, 182, 184, 186, 188, 190, 192, 194, 196, 198, 200, 202, 204, 206, 208, 210, 212, 214, 216, 218, 220, 222, 224, 226, 228, 230, 232, 234, 236, 238, 240, 242, 244, 246, 248, 250, 252, 254, 256, 258, 260, 262, 264, 266, 268, 270, 272, 274, 276, 278, 280, 282, 284, 286, 288, 290, 292, 294, 296, 298, 300, 302, 304, 306, 308, 310, 312, 314, 316, 318, 320, 322, 324, 326, 328, 330, 332, 334, 336, 338, 340, 342, 344, 346, 348, 350, 352, 354, 356, 358, 360, 362, 364, 366, 368, 370, 372, 374, 376, 378, 380, 382, 384, 386, 388, 390, 392, 394, 396, 398, 400, 402, 404, 406, 408, 410, 412, 414, 416, 418, 420, 422, 424, 426, 428, 430, 432, 434, 436, 438, 440, 442, 444, 446, 448, 450, 452, 454, 456, 458, 460, 462, 464, 466, 468, 470, 472, 474, 476, 478, 480, 482, 484, 486, 488, 490, 492, 494, 496, 498, 500, 502, 504, 506, 508, 510, 512, 514, 516, 518, 520, 522, 524, 526, 528, 530, 532, 534, 536, 538, 540, 542, 544, 546, 548, 550, 552, 554, 556, 558, 560, 562, 564, 566, 568, 570, 572, 574, 576, 578, 580, 582, 584, 586, 588, 590, 592, 594, 596, 598, 600, 602, 604, 606, 608, 610, 612, 614, 616, 618, 620, 622, 624, 626, 628, 630, 632, 634, 636, 638, 640, 642, 644, 646, 648, 650, 652, 654, 656, 658, 660, 662, 664, 666, 668, 670, 672, 674, 676, 678, 680, 682, 684, 686, 688, 690, 692, 694, 696, 698, 700, 702, 704, 706, 708, 710, 712, 714, 716, 718, 720, 722, 724, 726, 728, 730, 732, 734, 736, 738, 740, 742, 744, 746, 748, 750, 752, 754, 756, 758, 760, 762, 764, 766, 768, 770, 772, 774, 776, 778, 780, 782, 784, 786, 788, 790, 792, 794, 796, 798, 800, 802, 804, 806, 808, 810, 812, 814, 816, 818, 820, 822, 824, 826, 828, 830, 832, 834, 836, 838, 840, 842, 844, 846, 848, 850, 852, 854, 856, 858, 860, 862, 864, 866, 868, 870, 872, 874, 876, 878, 880, 882, 884, 886, 888, 890, 892, 894, 896, 898, 900, 902, 904, 906, 908, 910, 912, 914, 916, 918, 920, 922, 924, 926, 928, 930, 932, 934, 936, 938, 940, 942, 944, 946, 948, 950, 952, 954, 956, 958, 960, 962, 964, 966, 968, 970, 972, 974, 976, 978, 980, 982, 984, 986, 988, 990, 992, 994, 996, 998, 1000

[Signature]
 ARCHITECT

[Signature]
 ARCHITECT

[Signature]
 ARCHITECT

[Signature]
 ARCHITECT

[Signature]
 ARCHITECT

[Signature]
 ARCHITECT

[Signature]
 ARCHITECT